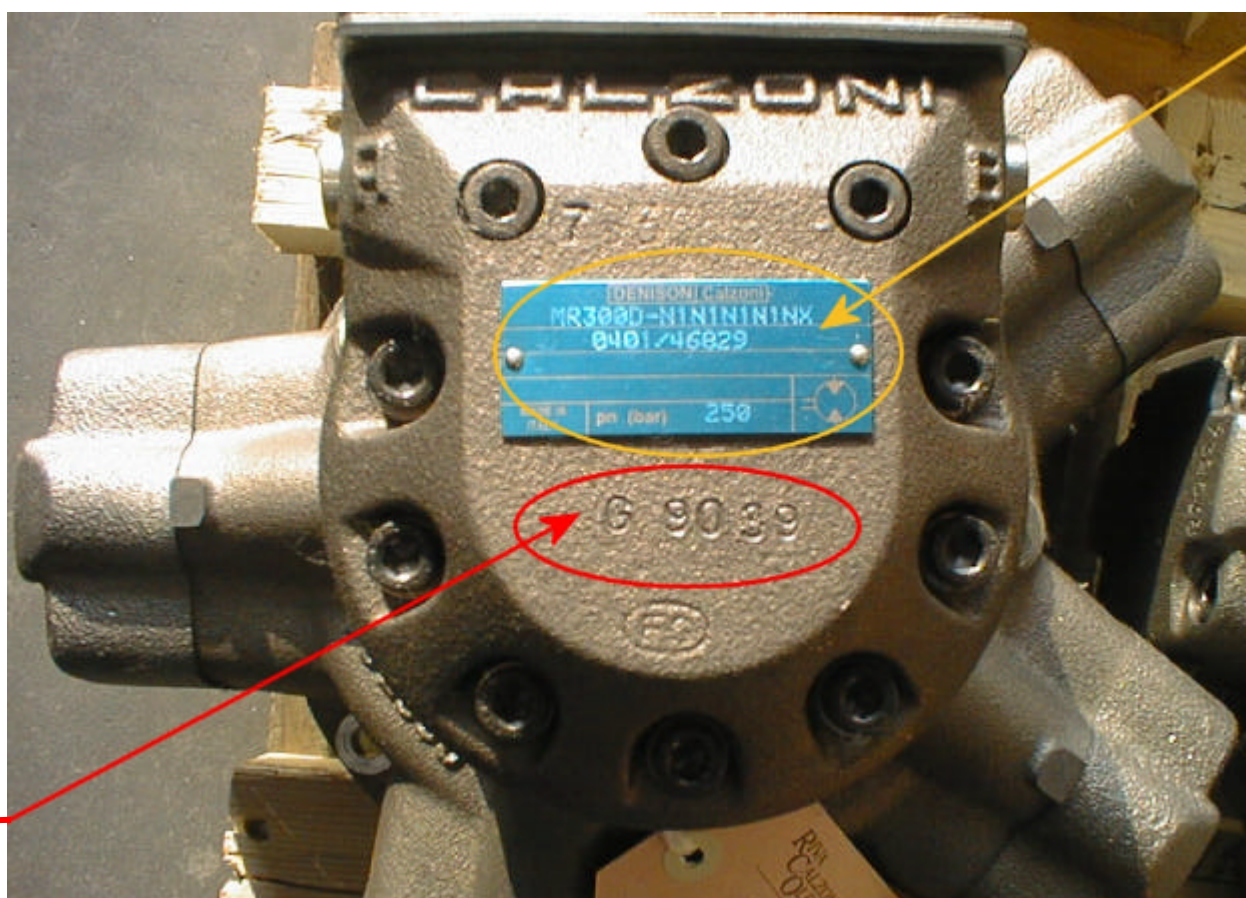


IDENTIFYING THE MOTOR

The **identification** can be found attached to the rotary valve housing. It shows the complete code of the motor, which describes its configuration (see technical catalogues), as well as the maximum permissible continuous working pressure.

Each motor also has a **serial number** *punched* on the rotary valve housing, consisting of a 5-digit code of five numbers or 1 letter and 4 numbers.



In order to correctly identify the motor, you must refer to both the motor code and its serial number.